



# Kids Ride-On Licensed Ford Ranger Wildtrak

## User Manual

RETAIN THIS MANUAL FOR FUTURE REFERENCE

PLEASE READ THIS MANUAL CAREFULLY BEFORE USE



# Table of Contents

Safety.....	1
General Safety Reminders .....	1
Battery Charging Safety .....	1
Included Items.....	3
Set-Up .....	4
Install the Axel and Wheels .....	4
Install the Steering Wheel.....	4
Install the Light Frame.....	4
Install the Seat .....	5
Install the Motor.....	5
Installing the Back Wheels .....	6
Install the Front Wheels.....	6
Install the Front Windscreen.....	7
Install the Hood .....	7
Install the Side Mirrors.....	7
Operation .....	8
Music Button .....	8
Remote Control .....	8
Troubleshooting.....	9
Specifications.....	10



# Safety

## General Safety Reminders

- Assembly, charging and adjustments must be performed by an adult
- Children under 36 months of age must not use this item in any way
- Ensure seat belt is secured onto car and also secured at connections when in use
- Must be used under adult supervision at all times
- Children must not stand on seat or play with foot pedal
- Ensure children are kept clear from packaging materials. Loose bags and small pieces can cause suffocation
- Do not allow more than 1 child to operate steering and/or pedal
- Modifying product or using any other materials/parts that are not provided with this product is prohibited (with the exclusion of accessories supplied by same manufacture)
- This product does not have any breaking mechanism. Releasing pressure from pedal will stop the car from moving
- Do not use this product near roads or footpaths
- Use this on small paths that are far from any traffic and in an open area or park that is considered safe
- Do not use this product on wet surfaces or on an incline or slope that's greater than 15°
- Never charge for longer than 10 hours
- Never open or dismantle battery or charger
- Always ensure that the battery secured in designated cavity
- Maximum weight is 30kg
- Age limit for driving product is 37-96 months
- It is normal for charger to slightly buzz and increase in temperature
- An increase of 30°C or more is abnormal. Please contact us if this occurs
- Battery needs to be charged at least once a month to keep it active. Battery may fully deplete if not kept active.

## Battery Charging Safety

- Battery polarity should not be reversed. Please ensure that the red wire is connected to the red battery terminal and the black wire is connected to the black battery terminal.
- Press the power switch to the "OFF" position to turn the power off.
- Open the seat, connect the battery plug, red wire to red battery terminal.
- Never let the battery drain completely or have the car go at a crawling speed. Recharge the battery when a decrease in speed and power is noticed. Warranty will be voided if misuse has occurred.
- Battery charging must be done by adults only. Never allow children to charge the battery. A child could be injured by the electric currents involved in charging the battery.



- Please don't let the wires short circuit.
- The charger and battery are not toys! Do not allow children to play with them.
- Only operate the battery and charger according to the specifications and instructions in this user manual.
- Please don't open the battery and the charger.
- Always secure the battery with the bracket, otherwise, the battery can fall out and injure children if the car tips over.
- The battery must be handled and operated by adults only. The battery is heavy and contains sulphuric acid. Dropping the battery could result in serious injuries.
- Before charging the battery, check if there are any damages to the battery, charger, the connectors and other parts. If any damage is found, the item should be repaired or replaced immediately. Do not use damaged charger, battery, connectors or other parts.
- It is normal for the adaptor to feel warm during charging, but if the charger feels too hot, stop the charging immediately and check the battery and adaptor.
- When charging the battery, turn off the power switch.
- Please charge the battery for 8 – 10 hours for the first use.
- Subsequent charges should be 6 – 8 hours, but should not exceed 10 hours.
- If not being used, batteries should still be charged at least once a month to keep the cells active.
- Batteries are perishable items that are subject to under and overcharging, please observe the charging times.

## Included Items



Item	Qty.
Car body	1
Front windscreen	1
Bonnet cover	1
Steering wheel	1
4x light frame	1
1 double seat	1
Front wheels	2
Back wheels	2
Wheel covers/hub caps	4
Side mirror	2
Charger	1
Remote	1
Battery	1



# Set-Up

**Video Tutorial:**

[Typical Ride-On Car Assembly](#)



**NOTE:** Installation must be done by an adult.

## Install the Axle and Wheels

Slide motor drive onto axle (Fig 1) then slide rear wheel onto axle (Fig 2).



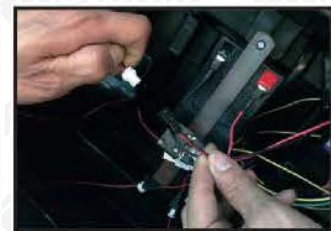
## Install the Steering Wheel

The steering wheel shaft may drop during transit or removal of packaging (Fig 3). If this happens, please push up shaft from underneath car (Fig 4) and connect wires and attach steering wheel to shaft (Fig 5).



## Install the Light Frame

First, please insert the line with the SM plug through right small hole in the car body, and then connect to the SM plug in the battery tank.



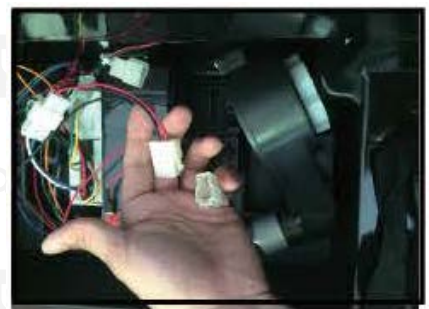
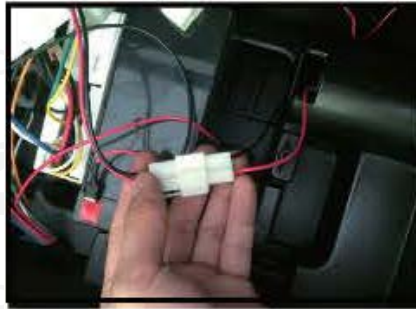
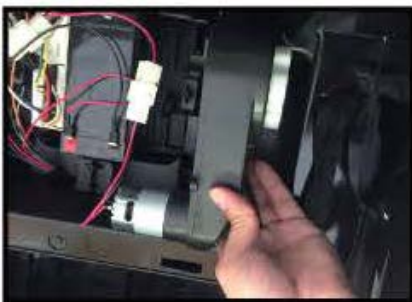
## Install the Seat

Put the seat on the car and use two screws to secure it.

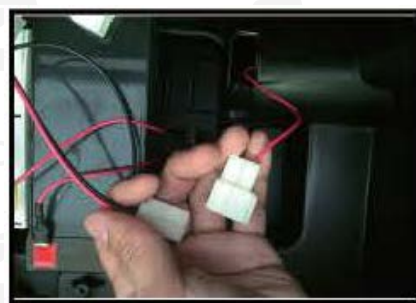


## Install the Motor

1. Find the motor in the battery tank.



2. Disconnect the lines.



3. Assemble the motor to the back wheel axle by inserting the axle into the motor hole, then connect the motor with lines to the car body.
4. Re-connect the motor.

## Installing the Back Wheels

Insert the back wheels in the back axles, and then insert one gasket and one cotter pin per wheel. Use the tool to fix the cotter pin and wind it into a circle, otherwise it will rub against the wheels. Finally, assemble the wheel covers and use the screws to secure them in place.



## Install the Front Wheels

Put one gasket first, and then insert the front wheels in the front axles. Same as installation of back wheels.







## Install the Front Windscreen

Insert the front windscreen onto the car, and then use the screws to secure it in place.



## Install the Hood

Insert the hood onto the car, and then use the screws to secure it in place. Aim at the retaining grooves.

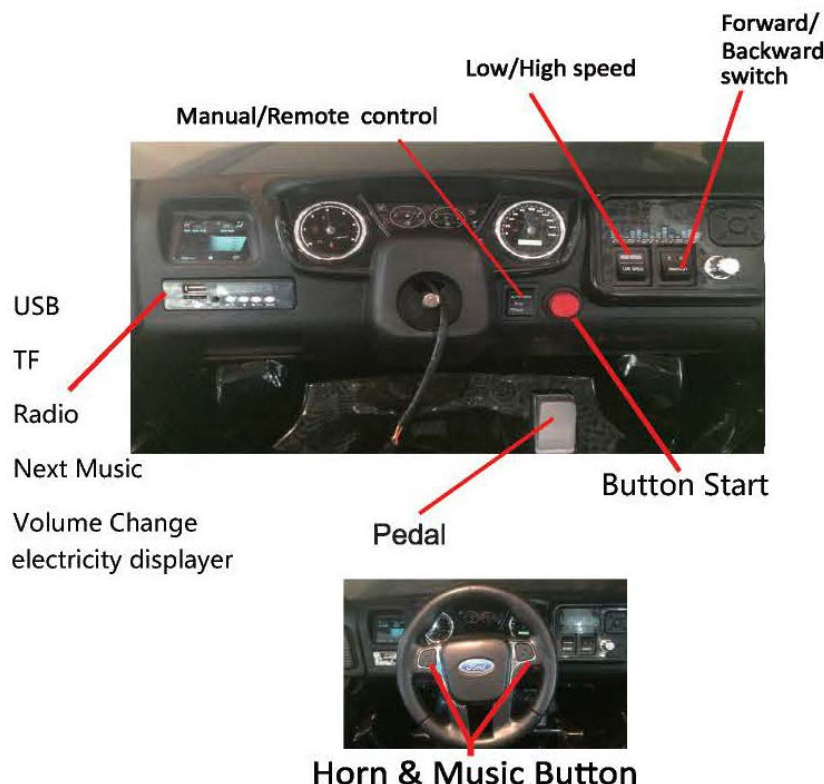


## Install the Side Mirrors

Aim the side mirrors towards the holes at the neck of the car, and then slide the side mirrors in.



# Operation



## Music Button

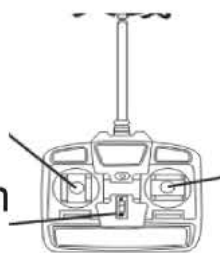
1. Press the music button on the steering wheel for horn or music.
2. Attach the MP3 lead to your device to play or own music through the car.

**NOTE:** The steering wheel sounds will not work when the MP3 lead is connected.

## Remote Control

- Press the power switch to the OFF position to turn the power off.
- Take off the battery cover screws and then open the battery cover.
- Press the power switch to the ON position.
- Battery charging must be done by adults only.
- The remote control must be handled and operated by adults only.
- Non-rechargeable batteries should not be recharged.
- Do not use different type of batteries or mix new and used batteries together.
- Batteries should be inserted towards the correct polarities.
- Remove exhausted batteries from the car.
- Rechargeable batteries should only be charged under an adult's supervision.
- Rechargeable batteries should be removed from the car before being charged.

Forward &amp; Backward

Turn left and turn  
right switch

R/C indicator light

# Troubleshooting

Symptom	Possible Cause	Possible Solution
Not moving at all when accelerating	Battery not connected	Please connect battery.
	RC/TC Switch is on	Turn Switch to "Manual."
	Switched off	Turn power switch to ON.
	Battery is flat	Battery has an average running usage of 1-2 hours. Please recharge battery.
	Exhausted battery life	If still does not work after 8 hours of charging the battery will need replacing.
	Damaged battery	Damage to battery can occur if left on charge for over 12 hours. Please avoid this. Battery will need replacing.
Not charging	Switched ON	This will not charge if unit is switch on. Remove charging cable, turn unit off and re-insert cable.
	Battery	If the charging indicator does not light, the battery may need replacing.
	Charger	If charging indicator does not light, the charger may need replacing.
	Button is engaged/active	If a button (accelerator, sound or other) is accidentally pressed and held it, the unit will not charge. Please ensure all buttons are operating normally and aren't jammed.
Remote control is not working	Manual Switch is on	Ensure "RC/TC" switch is on.
	Controller batteries	Ensure fresh AA or AAA batteries have been replaced in the controller.
	Aerial is not attached	Ensure that the aerial is screwed in correctly.
	Out of range	The controller has roughly 3m range. If the ride on vehicle is out of this range it may not be receiving the signal. Bring the controller within closer range.
High Speed is not working (if equipped)	Rear driving wheels are swapped around	Switch over the rear motors. Note: The connectors cannot be simply swapped over as they have a different configuration. Underneath the seat there is a black box with wires connected to it. Disconnect the motor wires, swap sides over and reconnect. Ensure the right motor is in the middle.
	Switch is on low	Turn switch to High.
	Low battery	Recharge battery.



## Kids Ride-On - Licensed Ford Ranger Wildtrak

Symptom	Possible Cause	Possible Solution
No sound	Volume turned down	Turn volume up.
	Aux cable in MP3 port	Remove aux cable from MP3 port.
Forward and reverse are swapped around	Rear driving wheels are swapped around	Switch over the rear motors. Note: The connectors cannot be simply swapped over as they have a different configuration. Underneath the seat there is a black box with wires connected to it. Disconnect the motor wires, swap sides over and reconnect. Ensure the right motor is in the middle.
Lights turn on and sounds works but does not move/accelerate	Not connected properly	Underneath the seat there is a black box with wires connected to it. Remove the motor wires and ensure metal pins are straight (they may be wedged to the side). Straighten pins and reconnect.

## Specifications

Model	Ranger
Gears	Forward and Reverse
Seat belts	Adjustable
Battery	12V 10Ah
Battery Charger	AC100-240V 50/60Hz
Charge Time	6-8hrs (full charge)
Drive Time	1-2hrs (full charge)
Remote Operation	Yes
Remote Battery	3 x AA Battery (Batteries not included)
Remote Distance	20m (+/- 5m)
Max. Weight Capacity	30kg



**Some experts believe that the incorrect or prolonged use of almost any product may cause serious injury or death. To help reduce your risk of serious injury or death, refer to the information below. For more information, see [www.datastreamserver.com/safety](http://www.datastreamserver.com/safety)**

- Consult all documentation, packaging and product labelling before use. Note that some products feature documentation available online. It is recommended to print and retain the documentation.
- Before each use, check the product for loose/broken/damaged/missing parts, wear or leaks (if applicable). Never use a product with loose/broken/damaged/missing parts, wear or leaks.
- Products must be inspected and serviced (if applicable) by a qualified technician every 6 months. This is based on average residential use by persons of average size and strength, and on a property of average metropolitan size. Use beyond these recommendations may require more frequent inspections/servicing.
- Ensure that all users of the product have completed a suitable industry recognised training course before being allowed access to the product.
- If this product has been purchased in error when considering the information presented here, contact the retailer directly for details of their returns policy, if required.
- The product has been supplied by a general merchandise retailer that may not be familiar with your specific application or description of application. Be sure to attain third-party approval from a qualified specialist for your application before use, regardless of any assurances from the retailer or its representatives.
- This product is not intended for use where fail-safe operation is required. As with any product (for example, automobile, computer, toaster), there is the possibility of technical issues that may require the repair or replacement of parts, or the product itself. If the possibility of such failure and the associated time it may take to rectify could in any way inconvenience the user, business or employee, or financially affect the user, business or employee, then the product is not suitable for your requirements. This product is not intended for use where incorrect operation or a failure of any kind, including but not limited to, a condition requiring product return, replacement, parts replacement or service by a technician may cause financial loss, loss of employee time or an inconvenience requiring compensation.

